

# acsento



COLLECTION 2022



# acsento

## Content

### FLANDERS

Bolzano	54
Chiara 826	12
Chiara 949	14
Chiara 1016	8
Chiara 1018	10
Classico 961-963	30
Curzo	36
Diamo	58
Ecstasy	62
Faro 880	16
Faro 884	18
Freek	60
Geometrics	56
Grunge	46
Himalaya	28
Loni 105	24
Loni 3128	26
Meda	50
Mila 011	20
Mila 016	22
Mystic	38
Nuance	44
Rabat	42
Venice	32

### HANDMADE

Darfield	74
Kingstown	76
Kreta	66
Madeira	82
Napoli	72
Newton	78
Pella	68
Ravenna	70
Westport	80

# Introduction



## Lokaal, handgemaakt én ecologisch

Acsento, sinds 2006 een dynamische speler op de internationale tapijtenmarkt, is vijftien jaar. Een speciale verjaardag, want we zijn verhuisd naar een nieuwe locatie én onze dochter Lisa komt erbij in het familiebedrijf. Ook in 2022 blijven wij een inspirerend aanbod van zowel klassieke als trendy producten aanbieden. Wereldwijd werken wij samen met geïnspireerde vakmensen waarmee we verhalen maken waar esthetiek, ambacht, traditie en innovatie samenkomen in een eclectisch aanbod.

Als familiebedrijf staan wij voor een persoonlijke en uitstekende service. Onze klanten worden met de uiterste zorg behandeld. Meer dan ooit zetten we ook in op duurzaamheid. Voor onze Flanders Collection kiezen we voluit voor lokale weverijen. Zo beperken we de vervuiling en onnodig transport en staan we dicht bij de leverancier en de klant. Bij onze Indische handgeweven collectie staat een eerlijke arbeidsethiek voorop en worden ecologische materialen gebruikt. Dat alles zonder competitieve prijzen uit het oog te verliezen.

Acsento volgt de interieurtrends op de voet en schakelt snel. Wij bieden alle standaardmaten, direct uit onze voorraad, maar kunnen ook maatwerk binnen de drie weken leveren. Hiermee maken wij het verschil met de andere spelers in de tapijtsector. Een tapijt is vandaag een onmisbaar interieurobject geworden. Voor klanten is tapijt een weloverwogen keuze. Iets waar we bij Acsento graag bij helpen met de gloednieuwe collecties van 2022:

In onze **Flanders Collection** staat tijdloze sfeer in een perfecte verhouding tussen prijs en kwaliteit centraal. De tapijten worden machinaal geweven door twee lokale weverijen. De gebruikte wol is van natuurlijke oorsprong, ongeverfd en wordt op ecologische wijze, zonder chemicaliën, gewassen.

Onze **Indische handgeweven collectie** ademt luxe. De tapijten worden gemaakt van wol, viscose, maar ook het ecologisch verantwoorde PET-yarn, afkomstig van gerecycleerde PET-flessen. Elk uniek exemplaar is handgeweven onder eerlijke werkcondities in de Indische fabrieken.

## Produits locaux, artisanaux et écologiques

Acsento, acteur dynamique sur le marché international du tapis depuis 2006, a quinze ans. Un anniversaire spécial, car nous avons déménagé et notre fille Lisa rejoint l'entreprise familiale. En 2022, nous continuerons à proposer une gamme inspirante de produits à la fois classiques et tendance. Dans le monde entier, nous travaillons avec des professionnels passionnés avec lesquels nous créons des histoires dans lesquelles l'esthétique, l'artisanat, la tradition et l'innovation se réunissent dans une gamme éclectique.

En tant qu'entreprise familiale, nous assurons un service personnalisé et irréprochable. Nos clients sont traités avec le plus grand soin. Plus que jamais, nous misons également sur la durabilité. Pour notre collection Flanders, nous optons pleinement pour des tapis tissés localement. Nous limitons ainsi la pollution liée au transport en étant proches du fournisseur et du client. Dans notre collection tissée à la main en Inde, une éthique de travail honnête est primordiale et des matériaux écologiques sont utilisés. Tout cela sans perdre de vue des prix compétitifs.

Acsento suit de près les tendances et s'adapte rapidement. Nous proposons des tailles standards, directement de notre stock, mais pouvons également livrer la plupart des produits sur mesure sous trois semaines. C'est ce qui nous distigue des autres acteurs sur le marché. Aujourd'hui, un tapis est devenu un accent d'intérieur indispensable pour habiller votre intérieur. C'est devenu un choix bien réfléchi. Chez Acsento, nous sommes heureux de vous aider dans ce choix avec **les toutes nouvelles collections 2022** :

Une atmosphère intemporelle dans un rapport parfait entre prix et qualité est typique pour notre **Flanders collection** composée de tapis tissés machinalement dans deux usines locales. La laine utilisée est d'origine naturelle, non teinte et lavée de manière écologique, sans produits chimiques.

Notre **collection tissée à la main en Inde** respire le luxe. Les tapis sont composés de laine, de viscose, mais aussi de fil PET écologique, car issu de bouteilles PET recyclées. Chaque pièce unique est tissée à la main dans des conditions de travail équitables dans les usines en Inde.

## Local, handmade and ecological

Acsento, a dynamic player on the international carpet market since 2006, is fifteen years old. A special birthday, because we have moved to a new location and our daughter Lisa joins the family business. In 2022 we will continue offering an inspiring range of both classic and trendy products. Worldwide we work with passionate professionals with whom we create stories where aesthetics, craft, tradition and innovation come together in an eclectic range.

As a family business, we stand for a personal and excellent service. Our customers are treated with the utmost care. More than ever, we are also focusing on sustainability.

For our Flanders Collection, we fully opt for local weaving mills. In this way we limit pollution through transport by being close to the supplier and the customer. In our Indian handwoven collection, an honest work ethic is essential and ecological materials are used. All this without losing focus on competitive prices.

Acsento closely follows interior trends and switches quickly. We offer multiple standard sizes, directly from our stock. We can also deliver custom made products within three weeks. This is where we make the difference with other players in the market. Today, a carpet has become an indispensable feature in your interior. More than ever, it is a well-considered choice for customers. Something we, at Acsento, are happy to assist with through our **brand new 2022 collections**:

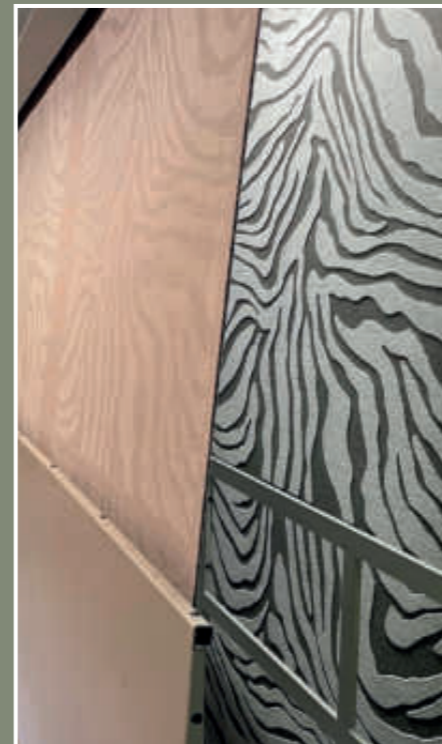
Timeless atmosphere in a perfect relationship between price and quality is central to our **Flanders Collection**. These carpets are machine woven by two local weaving mills. The wool used is of natural origin, undyed and washed in an ecological way, without chemicals.

Our **Indian handwoven collection** gives a feeling of luxury. The carpets are made of wool and viscose, but also the ecological material PET yarn, which comes from recycled PET bottles. Each unique piece is handwoven under fair working conditions in the on-site factories.



# Flanders collection

07



Timeless perfection,  
ecological products  
woven in local weaving mills.

# Chiara 1016

## QUALITY

- viscose, wool, polyamide
- flat woven - 1550g/m<sup>2</sup> - 4 mm
- machine made - Belgium

## STANDARD SIZES

- 160x230 cm
- 200x290 cm
- 240x340 cm
- 280x380 cm

## SPECIAL SIZES

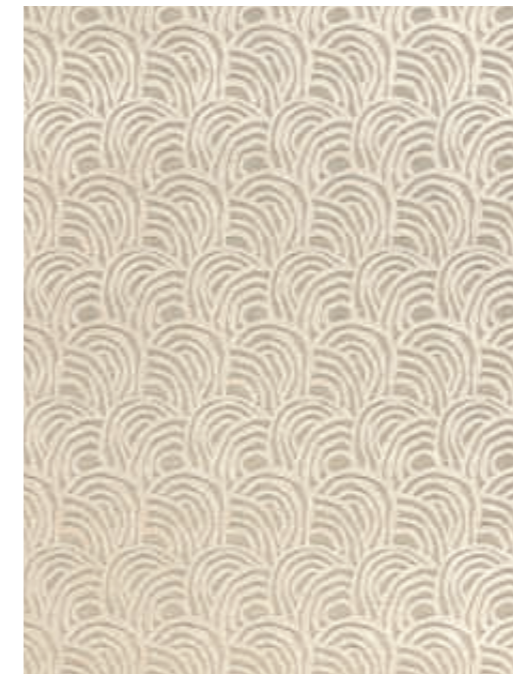
- max width 280 cm
- max length 380 cm

## SHAPES



## DELIVERY

- standard sizes: 2 weeks
- special sizes: 3 weeks



beige/beige



grey/anthracite



grey/blue



beige/gold

# Chiara 1018

## QUALITY

- viscose, wool, polyamide
- flat woven - 1550g/m<sup>2</sup> - 4 mm
- machine made - Belgium

## STANDARD SIZES

- 160x230 cm
- 200x290 cm
- 240x340 cm
- 280x380 cm

## SPECIAL SIZES

- max width 280 cm
- max length 380 cm

## SHAPES



## DELIVERY

- standard sizes: 2 weeks
- special sizes: 3 weeks



beige/beige



grey/tobacco



anthracite/blue



beige/gold

# Chiara 826

## QUALITY

- viscose, wool, polyamide
- flat woven - 1550g/m<sup>2</sup> - 4 mm
- machine made - Belgium

## STANDARD SIZES

- 160x230 cm
- 200x290 cm
- 240x340 cm
- 280x380 cm

## SPECIAL SIZES

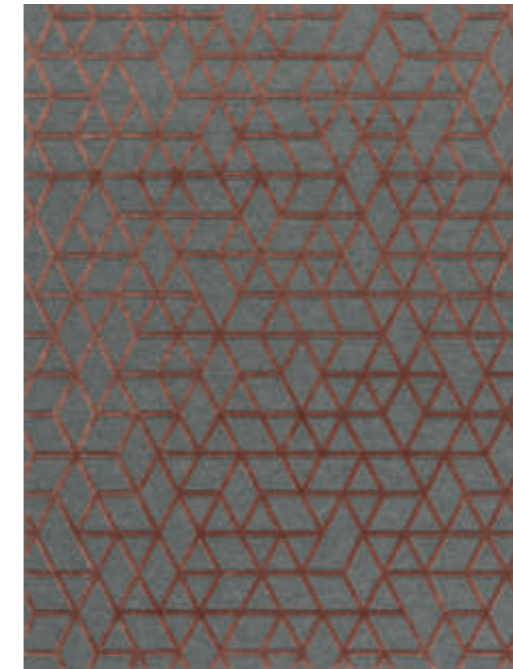
- max width 280 cm
- max length 380 cm

## SHAPES



## DELIVERY

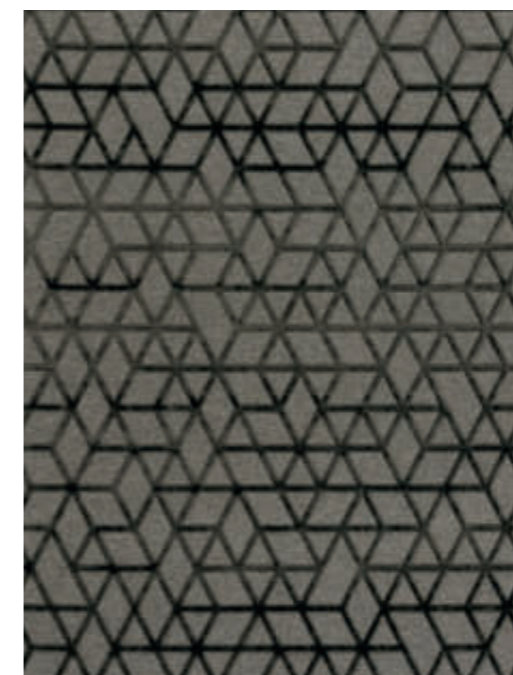
- standard sizes: 2 weeks
- special sizes: 3 weeks



grey/red



beige/off-white



grey/anthracite



beige/grey



# Chiara 949

## QUALITY

- viscose, wool, polyamide
- flat woven - 1550g/m<sup>2</sup> - 4 mm
- machine made - Belgium



## STANDARD SIZES

- 160x230 cm
- 200x290 cm
- 240x340 cm
- 280x380 cm

## SPECIAL SIZES

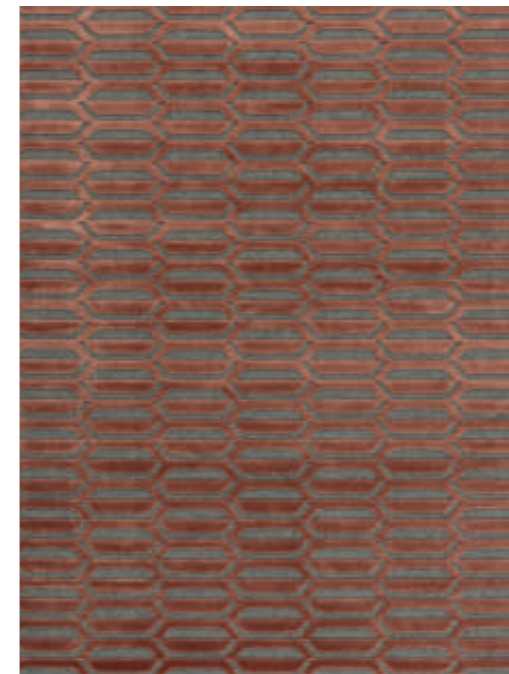
- max width 280 cm
- max length 380 cm

## SHAPES

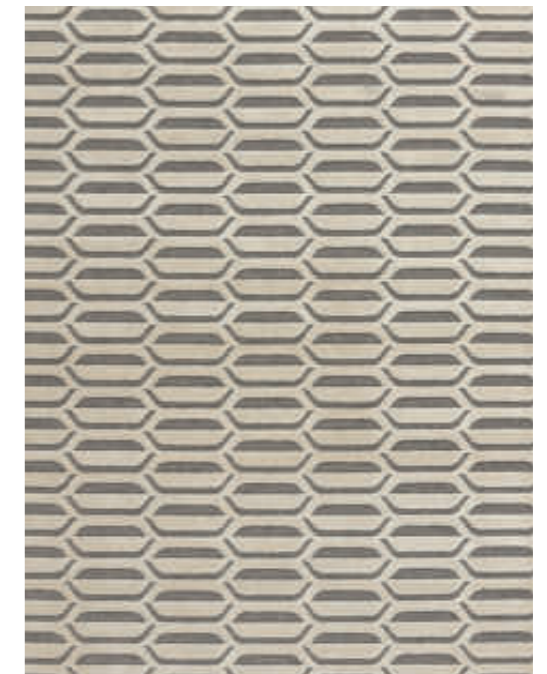


## DELIVERY

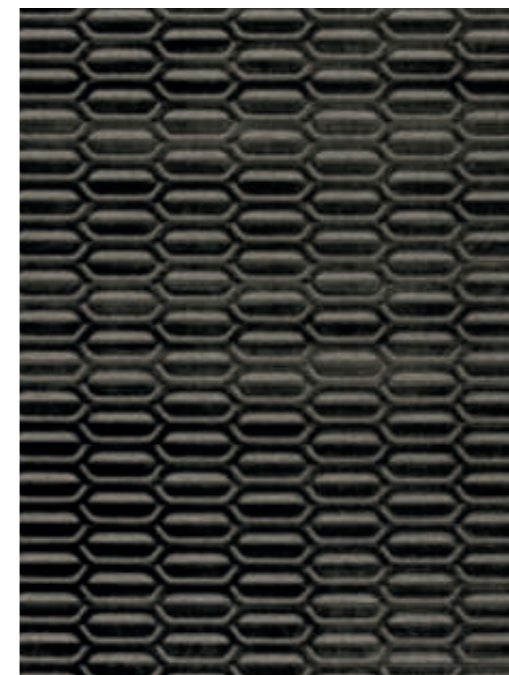
- standard sizes: 2 weeks
- special sizes: 3 weeks



grey/red



grey/beige



grey/anthracite



beige/beige

# Faro 880

## QUALITY

- viscose/polyester
- 1600g/m<sup>2</sup> - 3,5 mm
- machine made - Belgium

## STANDARD SIZES

- 160x230 cm
- 200x300 cm
- 240x340 cm
- 280x380 cm

## SPECIAL SIZES

- max width 240 cm
- max length 340 cm

## SHAPES



## DELIVERY

- standard sizes: 2 weeks
- special sizes: 3 weeks



olive



brown/black



grey/silver



beige/gold

# Faro 884

## QUALITY

- viscose/polyester
- 1600g/m<sup>2</sup> - 3,5 mm
- machine made - Belgium



## STANDARD SIZES

- 160x230 cm
- 200x300 cm
- 240x340 cm
- 280x380 cm

## SPECIAL SIZES

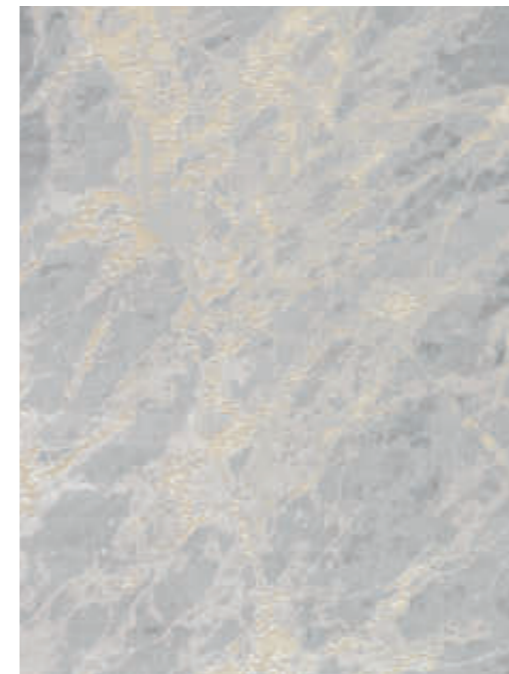
- max width 240 cm
- max length 340 cm

## SHAPES

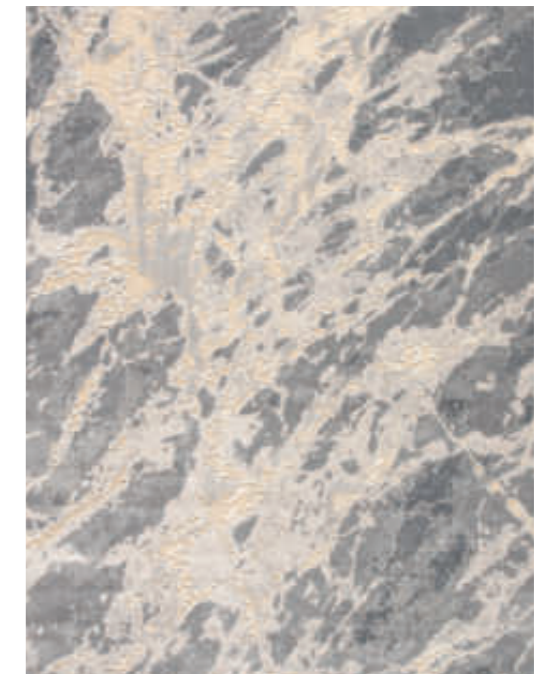


## DELIVERY

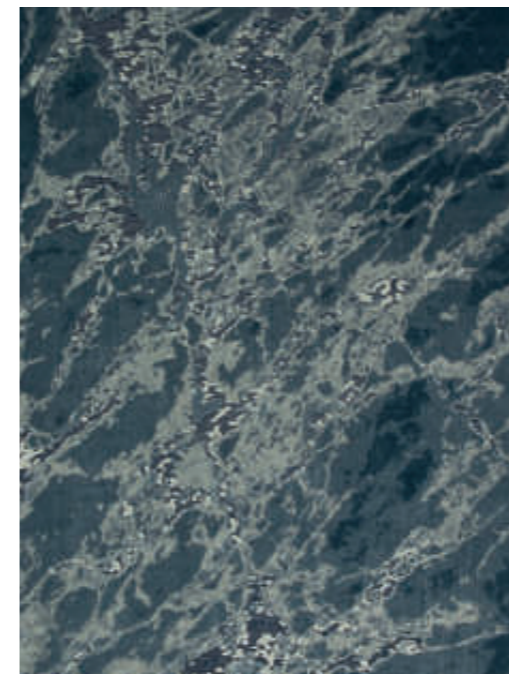
- standard sizes: 2 weeks
- special sizes: 3 weeks



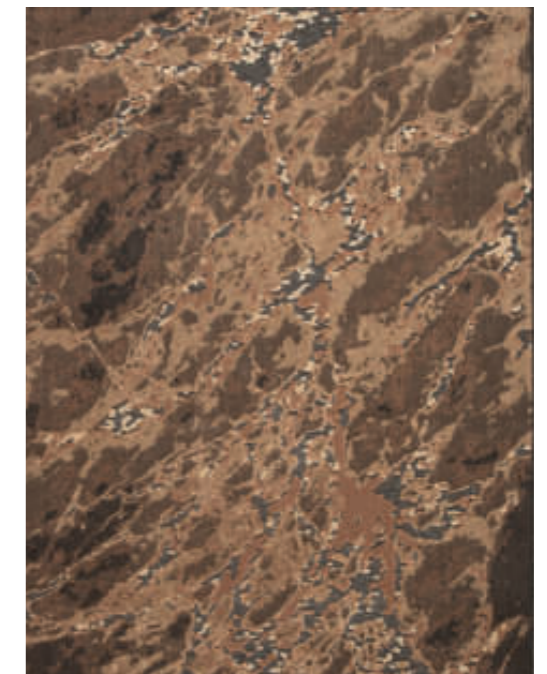
silver



grey



blue



brown/black

# Mila 011

## QUALITY

- wool, viscose
- flat woven - 1600g/m<sup>2</sup> - 4 mm
- machine made - Belgium



## STANDARD SIZES

- 160x230 cm
- 200x290 cm
- 240x340 cm
- 280x380 cm

## SPECIAL SIZES

- max width 280 cm
- max length 380 cm

## SHAPES



## DELIVERY

- standard sizes: 2 weeks
- special sizes: 3 weeks



beige



silver



grey



red

# Mila 016

## QUALITY

- wool, viscose
- flat woven - 1600g/m<sup>2</sup> - 4 mm
- machine made - Belgium



## STANDARD SIZES

- 160x230 cm
- 200x290 cm
- 240x340 cm
- 280x380 cm

## SPECIAL SIZES

- max width 280 cm
- max length 380 cm

## SHAPES



## DELIVERY

- standard sizes: 2 weeks
- special sizes: 3 weeks



beige



silver



grey



blue

# Loni 105

## QUALITY

- viscose, wool
- flat woven - 1600g/m<sup>2</sup> - 4 mm
- machine made - Belgium



## STANDARD SIZES

- 160x230 cm
- 200x290 cm
- 240x340 cm
- 280x380 cm

## SPECIAL SIZES

- max width 280 cm
- max length 380 cm

## SHAPES



## DELIVERY

- standard sizes: 2 weeks
- special sizes: 3 weeks



beige



grey



bronze



blue

# Loni 3128

## QUALITY

- viscose, wool
- flat woven - 1600g/m<sup>2</sup> - 4 mm
- machine made - Belgium

## STANDARD SIZES

- 160x230 cm
- 200x290 cm
- 240x340 cm
- 280x380 cm

## SPECIAL SIZES

- max width 280 cm
- max length 380 cm

## SHAPES



## DELIVERY

- standard sizes: 2 weeks
- special sizes: 3 weeks



beige



grey



bronze



ocher

# Himalaya

## QUALITY

- viscose, polyester
- flat woven - 2200g/m<sup>2</sup> - 7,5 mm
- machine made - Belgium



## STANDARD SIZES

- 160x230 cm
- 200x300 cm
- 240x340 cm
- 280x380 cm

## SPECIAL SIZES

- max width 280 cm
- max length 380 cm

## SHAPES



## DELIVERY

- standard sizes: 2 weeks
- special sizes: 3 weeks



809 beige/off-white



810 beige/off-white



840 off-white/blue



878 grey/beige



# Classico 961-963

## QUALITY

- viscose
- 1700g/m<sup>2</sup> - 3,5 mm
- machine made - Belgium

## STANDARD SIZES

- 160x230 cm
- 200x290 cm
- 240x340 cm
- 280x380 cm

## DELIVERY

- standard sizes: 2 weeks



des. 961 – stone 475



des. 961 – stone 477



des. 963 – stone 475



des. 963 – stone 477

# Venice

## QUALITY

- viscose
- 840g/m<sup>2</sup> - 3,5 mm
- machine made - Belgium

## STANDARD SIZES

- 160x230 cm
- 200x290 cm

## DELIVERY

- standard sizes: 2 weeks



des. 9792 – beige/aqua



des. 9810 – beige/grey



des. 9883 – anthracite/multicolour



des. 9898 – beige/grey

# Venice

## QUALITY

- viscose
- 840g/m<sup>2</sup> - 3,5 mm
- machine made - Belgium

## STANDARD SIZES

- 160x230 cm
- 200x290 cm

## DELIVERY

- standard sizes: 2 weeks



des. 9930 – stone/anthracite



des. 9937 – red multicolour



des. 9994 – beige



des. 9994 – stone

# Curzo

## QUALITY

- acrylic, polyester, viscose, cotton
- chenille - 1540g/m<sup>2</sup> - 3,5 mm
- machine made - Belgium

## STANDARD SIZES

- 170x230 cm
- 200x300 cm
- 240x340 cm

## DELIVERY

- standard sizes: 2 weeks



taupe



basalt



stone



natural

# Mystic

## QUALITY

- acrylic, polyester, viscose, cotton
- chenille - 1540g/m<sup>2</sup> - 3,5 mm
- machine made - Belgium



## STANDARD SIZES

- 170x230 cm
- 200x300 cm
- 240x340 cm
- 320x420 cm

## SPECIAL SIZES

- max width 320 cm
- max length 420 cm

## SHAPES



## DELIVERY

- standard sizes: 2 weeks
- special sizes: 3 weeks



silver



taupe



olive



bronze

# Mystic

## QUALITY

- acrylic, polyester, viscose, cotton
- chenille - 1540g/m<sup>2</sup> - 3,5 mm
- machine made - Belgium



## STANDARD SIZES

- 170x230 cm
- 200x300 cm
- 240x340 cm
- 320x420 cm

## SPECIAL SIZES

- max width 320 cm
- max length 420 cm

## SHAPES



## DELIVERY

- standard sizes: 2 weeks
- special sizes: 3 weeks



navy



anthracite



grey



aubergine

# Rabat

## QUALITY

- acrylic, polyester, viscose, cotton
- chenille - 1540g/m<sup>2</sup> - 3,5 mm
- machine made - Belgium



## STANDARD SIZES

- 170x230 cm
- 200x300 cm
- 240x340 cm

## SPECIAL SIZES

- max width 240 cm
- max length 340 cm

## SHAPES



## DELIVERY

- standard sizes: 2 weeks
- special sizes: 3 weeks



silver grey



blue taupe



green taupe



gold

# Nuance

## QUALITY

- acrylic, polyester, viscose, cotton
- chenille - 1540g/m<sup>2</sup> - 3,5 mm
- machine made - Belgium

## STANDARD SIZES

- 170x230 cm
- 200x300 cm
- 240x340 cm

## SPECIAL SIZES

- max width 240 cm
- max length 340 cm

## SHAPES



## DELIVERY

- standard sizes: 2 weeks
- special sizes: 3 weeks



green



olive



silver



grey



# Grunge

## QUALITY

- acrylic, polyester, viscose, cotton
- chenille - 1540g/m<sup>2</sup> - 3,5 mm
- machine made - Belgium



## STANDARD SIZES

- 170x230 cm
- 200x300 cm
- 240x340 cm
- 320x420 cm

## SPECIAL SIZES

- max width 320 cm
- max length 420 cm

## SHAPES



## DELIVERY

- standard sizes: 2 weeks
- special sizes: 3 weeks



old pink



beige



metallic



anthracite

# Grunge

## QUALITY

- acrylic, polyester, viscose, cotton
- chenille - 1540g/m<sup>2</sup> - 3,5 mm
- machine made - Belgium



## STANDARD SIZES

- 170x230 cm
- 200x300 cm
- 240x340 cm
- 320x420 cm

## SPECIAL SIZES

- max width 320 cm
- max length 420 cm

## SHAPES



## DELIVERY

- standard sizes: 2 weeks
- special sizes: 3 weeks



silver



aqua



rust



wine red

# Meda

## QUALITY

- acrylic, polyester, viscose, cotton
- chenille - 1540g/m<sup>2</sup> - 3,5 mm
- machine made - Belgium

## STANDARD SIZES

- 170x230 cm
- 200x300 cm
- 240x340 cm

## DELIVERY

- standard sizes: 2 weeks



beige



rust



denim



wine red

# Meda

## QUALITY

- acrylic, polyester, viscose, cotton
- chenille - 1540g/m<sup>2</sup> - 3,5 mm
- machine made - Belgium

## STANDARD SIZES

- 170x230 cm
- 200x300 cm
- 240x340 cm

## DELIVERY

- standard sizes: 2 weeks



silver



grey



metallic



old pink

# Bolzano

## QUALITY

- 40% acrylic, 27% polyester, 14% viscose, 19% cotton
- chenille - 1540g/m<sup>2</sup> - 3,5 mm
- machine made - Belgium



## STANDARD SIZES

- 170x230 cm
- 200x300 cm
- 240x340 cm

## SPECIAL SIZES

- max width 240 cm
- max length 340 cm

## SHAPES



## DELIVERY

- standard sizes: 2 weeks
- special sizes: 3 weeks



beige



bronze



army green



grey

# Geometrics

## QUALITY

- acrylic, polyester, viscose, cotton
- chenille - 1540g/m<sup>2</sup> - 3,5 mm
- machine made - Belgium

## STANDARD SIZES

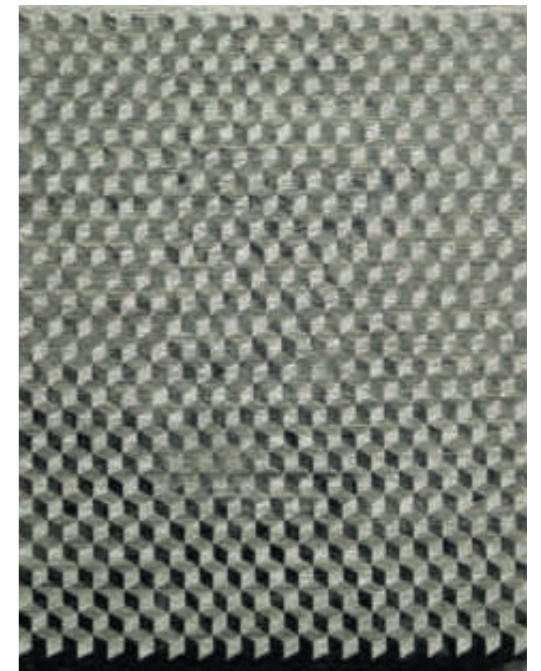
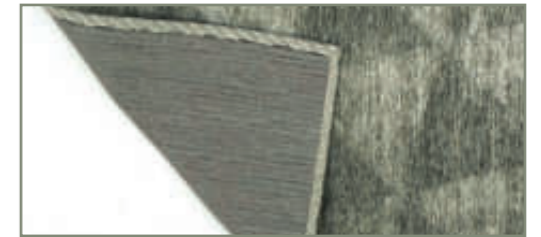
- 170x230 cm
- 200x300 cm
- 240x340 cm

## DELIVERY

- standard sizes: 2 weeks



coates grey



infini taupe



rombina beige/black



nika silver

# Diamo

## QUALITY

- acrylic, polyester
- chenille - 1150g/m<sup>2</sup> - 3,5 mm
- machine made - Belgium



IN- AND OUTDOOR USE

## STANDARD SIZES

- 155x230 cm
- 200x300 cm

## SPECIAL SIZES

- max width 200 cm
- max length 300 cm

## SHAPES



## DELIVERY

- standard sizes: 2 weeks
- special sizes: 3 weeks



brown



cognac



ice



silver

# Freek

## QUALITY

- polypropylene, PES
- chenille - 1080g/m<sup>2</sup> - 3 mm
- machine made - Belgium



IN- AND OUTDOOR USE

## STANDARD SIZES

- 160x230 cm
- 200x300 cm

## DELIVERY

- standard sizes: 2 weeks



carbon



green



silver



taupe



# Ecstasy

## QUALITY

- polypropylene, PES
- chenille - 1080g/m<sup>2</sup> - 3 mm
- machine made - Belgium

## STANDARD SIZES

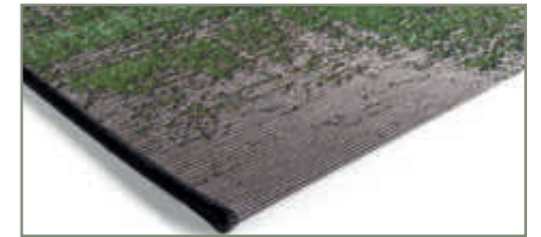
- 160x230 cm
- 200x300 cm

## DELIVERY

- standard sizes: 2 weeks



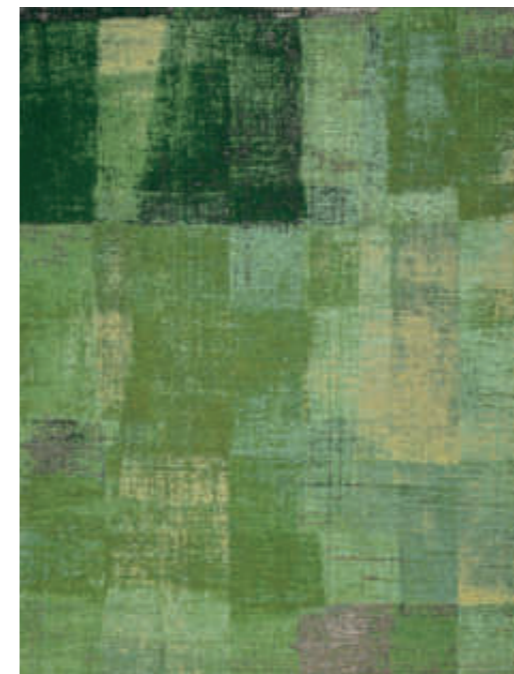
IN- AND OUTDOOR USE



grey/black



red



green



multicolour



# Handmade collection

65



Unique, luxury, handwoven,  
honest and ecological products

# Kreta

## QUALITY

- modified polyester, PET, cotton
- handloom - 4920g/m<sup>2</sup> - 22 mm
- handwoven - India

## STANDARD SIZES

- 160x230 cm
- 200x290 cm
- 240x340 cm

## SHAPES



## DELIVERY

- standard sizes: 2 weeks
- special sizes: 3 weeks



beige



cream



mouse grey



warm grey

# Pella

## QUALITY

- modified polyester, PET, cotton
- handloom - 3000g/m<sup>2</sup> - 42 mm
- handwoven - India

## STANDARD SIZES

- 160x230 cm
- 200x290 cm
- 240x340 cm

## SHAPES



## DELIVERY

- standard sizes: 2 weeks
- special sizes: 3 weeks



champagne



green mix



taupe



white

# Ravenna

## QUALITY

- wool, viscose, cotton
- pitloom - 2900g/m<sup>2</sup> - 20 mm
- handwoven - India

## STANDARD SIZES

- 160x230 cm
- 200x290 cm
- 240x340 cm

## DELIVERY

- standard sizes: 2 weeks



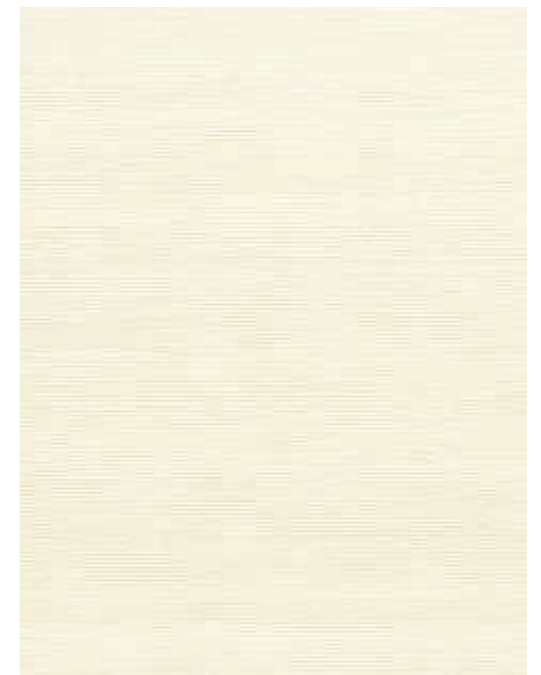
green mix



silver



taupe



white

# Napoli

## QUALITY

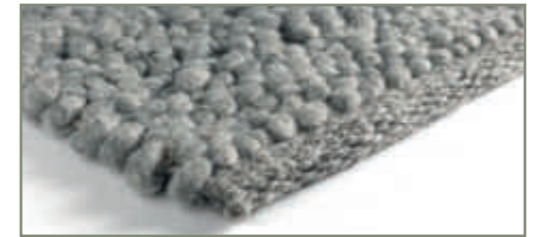
- wool, viscose, cotton
- handloom - 3900g/m<sup>2</sup> - 15 mm
- handwoven - India

## STANDARD SIZES

- 160x230 cm
- 200x290 cm
- 240x340 cm

## DELIVERY

- standard sizes: 2 weeks



grey



natural mix



silver



taupe

# Darfield

## QUALITY

- wool, cotton
- handloom - 2500g/m<sup>2</sup> - 10 mm
- handwoven - India



## CUSTOM SIZES

- minimum 3m<sup>2</sup>

## SHAPES



## DELIVERY

- special sizes: 8 weeks



silver



white



beige

# Kingstown

## QUALITY

- wool, cotton
- handloom - 3500g/m<sup>2</sup> - 20 mm
- handwoven - India

## CUSTOM SIZES

- minimum 3m<sup>2</sup>

## SHAPES



## DELIVERY

- special sizes: 8 weeks



grey



beige



natural



# Newton

## QUALITY

- wool, cotton
- handloom - 3500g/m<sup>2</sup> - 20 mm
- handwoven - India

## CUSTOM SIZES

- minimum 3m<sup>2</sup>

## SHAPES



## DELIVERY

- special sizes: 8 weeks



white



grey



anthracite

# Westport

## QUALITY

- wool, cotton
- handloom - 4000g/m<sup>2</sup> - 20 mm
- handwoven - India



## CUSTOM SIZES

- minimum 3m<sup>2</sup>

## SHAPES



## DELIVERY

- special sizes: 8 weeks



white



beige



grey

# Madeira

## QUALITY

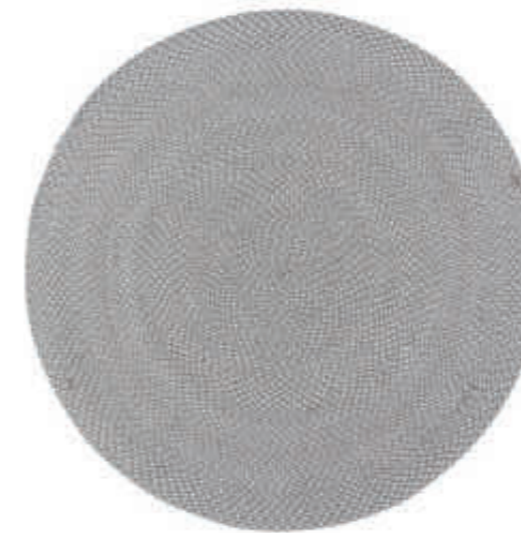
- PET yarn
- handwoven - 1700g/m<sup>2</sup> - 6 mm
- handwoven - India

## STANDARD SIZES

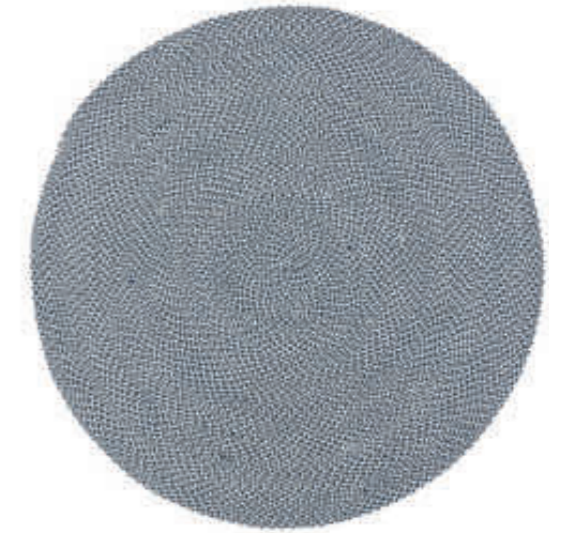
- Ø 150 cm
- Ø 200 cm

## DELIVERY

- standard sizes: 2 weeks



beige/grey/white



anthracite/grey/white

IN- AND OUTDOOR USE



**acsento**



**Aciento bv**

Luipaardstraat 12 - 8500 Kortrijk - Belgium

+32 (0)56 51 45 71

info@aciento.com

**[www.aciento.be](http://www.aciento.be)**

January 2022